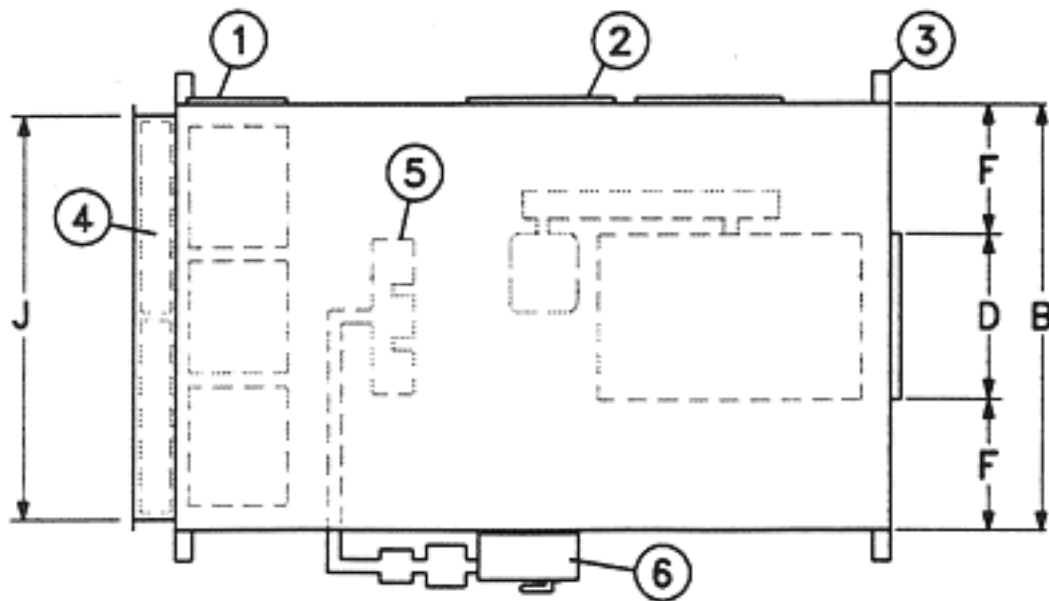
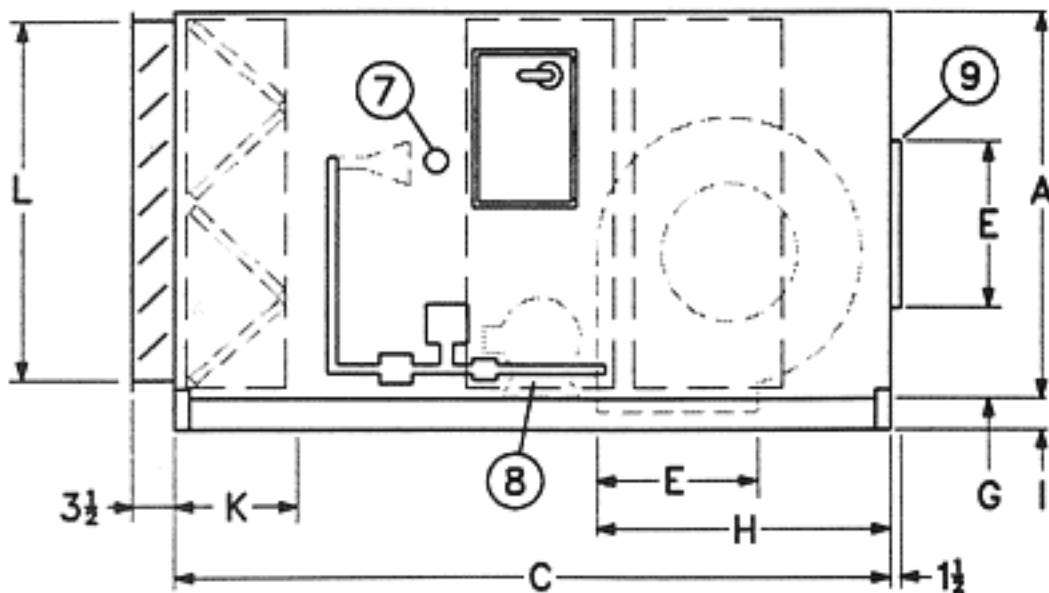


## DIRECT GAS FIRED AIR MAKE-UP UNITS TYPICAL ARRANGEMENT



PLAN VIEW



ELEVATION VIEW

### Components:

1. FILTER ACCESS DOOR
2. FAN & MOTOR ACCESS DOOR
3. LIFTING POINT
4. INLET DAMPER
5. DIRECT GAS FIRED BURNER
6. CONTROL PANEL
7. INSPECTION PORT
8. FAN MOTOR
9. ALTERNATE DISCHARGE

### Notes:

1. ALL DIMENSIONS ARE IN INCHES AND SUBJECT TO MANUFACTURING TOLERANCES.
2. UNIT WEIGHTS ARE APPROXIMATE.

### Indoor Horizontal Unit Dimensions

| Model | Dimensions |    |     |    |    |    |                |                |                |   |    |   |    |    | No. & Size of Filters | Unit Weight (Lbs.) |      |
|-------|------------|----|-----|----|----|----|----------------|----------------|----------------|---|----|---|----|----|-----------------------|--------------------|------|
|       | A          | B  | C   | D  | E  | F  | D <sub>1</sub> | E <sub>1</sub> | F <sub>1</sub> | G | H  | I | J  | K  |                       |                    | L    |
| 110   | 38         | 27 | 80  | 11 | 12 | 8  | —              | —              | —              | 4 | 20 | 3 | 23 | 19 | 34                    | 2-16x25x2          | 950  |
| 112   | 38         | 34 | 90  | 16 | 14 | 9  | 16             | 14             | 9              | 4 | 28 | 3 | 30 | 24 | 34                    | 4-16x20x2          | 1200 |
| 115   | 38         | 42 | 100 | 18 | 16 | 12 | 20             | 17             | 11             | 4 | 33 | 3 | 38 | 27 | 34                    | 6-20x20x2          | 1500 |
| 118   | 48         | 52 | 110 | 22 | 19 | 15 | 24             | 21             | 14             | 4 | 40 | 4 | 48 | 26 | 44                    | 6-20x25x2          | 1950 |
| 120   | 48         | 52 | 110 | 26 | 25 | 13 | 28             | 21             | 12             | 4 | 42 | 4 | 48 | 27 | 44                    | 8-20x25x2          | 2200 |
| 122   | 54         | 62 | 130 | 28 | 28 | 17 | 30             | 25             | 16             | 8 | 48 | 4 | 58 | 27 | 50                    | 12-20x20x2         | 2450 |
| 125   | 58         | 62 | 130 | 32 | 32 | 15 | 34             | 28             | 14             | 8 | 51 | 4 | 58 | 27 | 54                    | 15-20x20x2         | 2850 |
| 127   | 65         | 77 | 140 | 35 | 35 | 21 | 37             | 31             | 20             | 8 | 56 | 4 | 73 | 27 | 61                    | 15-20x25x2         | 3700 |
| 130   | 70         | 77 | 140 | 37 | 37 | 20 | 41             | 34             | 18             | 8 | 62 | 6 | 73 | 27 | 66                    | 18-20x25x2         | 4400 |
| 133   | 80         | 82 | 150 | 46 | 34 | 18 | 44             | 37             | 19             | 8 | 67 | 6 | 78 | 30 | 76                    | 24-20x20x2         | 5000 |

Note: D, E, F Dimensions for Forward Curved Fan Units / D<sub>1</sub>, E<sub>1</sub>, F<sub>1</sub> Dimensions for Backward Inclined Fan Units

ALL DIMENSIONS ARE TYPICAL FOR STANDARD CONFIGURATIONS. DUE TO CUSTOM MANUFACTURING AND SELECTED OPTIONS, DIMENSIONS MAY CHANGE, CONTACT SALES REPRESENTATIVE FOR DESIGN VARIATIONS.